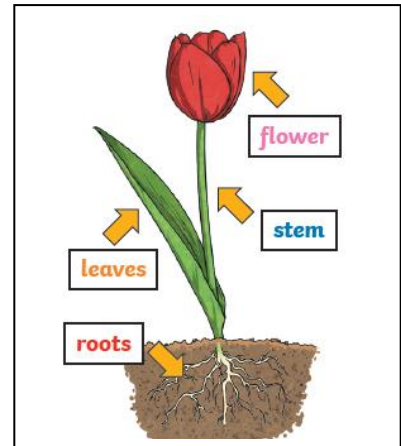


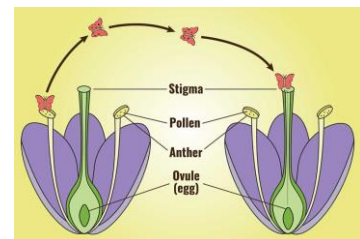
Key Vocabulary	
roots	These anchor the plant into the ground.
stem	This holds the plant up and carries water and nutrients from the soil to the leaves.
leaves	These make food for the plant.
flowers	These make seeds to grow into new plants.
nutrients	These substances are needed by living things to grow and survive.
fertilisation	When the male and female parts of the flower have mixed in order to make seeds for new plants.
petal	The brightly coloured part of the flower that attracts insects to pollinate the plant.
pollination	When pollen (a fine powdery substance produced by a flowering plant) is moved from the male anther of a flower to the female stigma.
pollinator	Animals or insects which carry pollen between plants. Examples include birds, bees and bats.
germination	When a seed starts to grow



Germination



Pollination



Fertilisation



Pollinator



Key Knowledge

How water moves through a plant	What?	The roots absorb water from the soil.
	Where?	The stem transports water to the leaves.
	When?	Water evaporates from the leaves.
	Why?	This evaporation causes more water to be sucked up by the stem.
What does a plant need to grow?	What?	Plants need water and light to grow.
	Where?	Plants need enough room to grow.
	How?	Plants make food using energy from the light.

Know how to:

- Identify and describe functions of different parts of flowering plants (roots, stem, leaves and flowers)
- Explore requirements of plants for life and growth
- Investigate the way in which water is transported within plants
- Explore the lifecycle of flowering plants including pollination, seed formation and seed dispersal

**Final Outcome:** To use their knowledge to grow a class plant and create an information booklet on how to do so.